

Introduction

What is FlexiCode?

FlexiCode is a software for designing graphical messages for Metsa P2128 Industrial Printer.

FlexiCode offers additional features in messages such as Barcode, Logo, and Fonts to the users.

FlexiCode communicates with Metsa Printers via COM port (RS232).

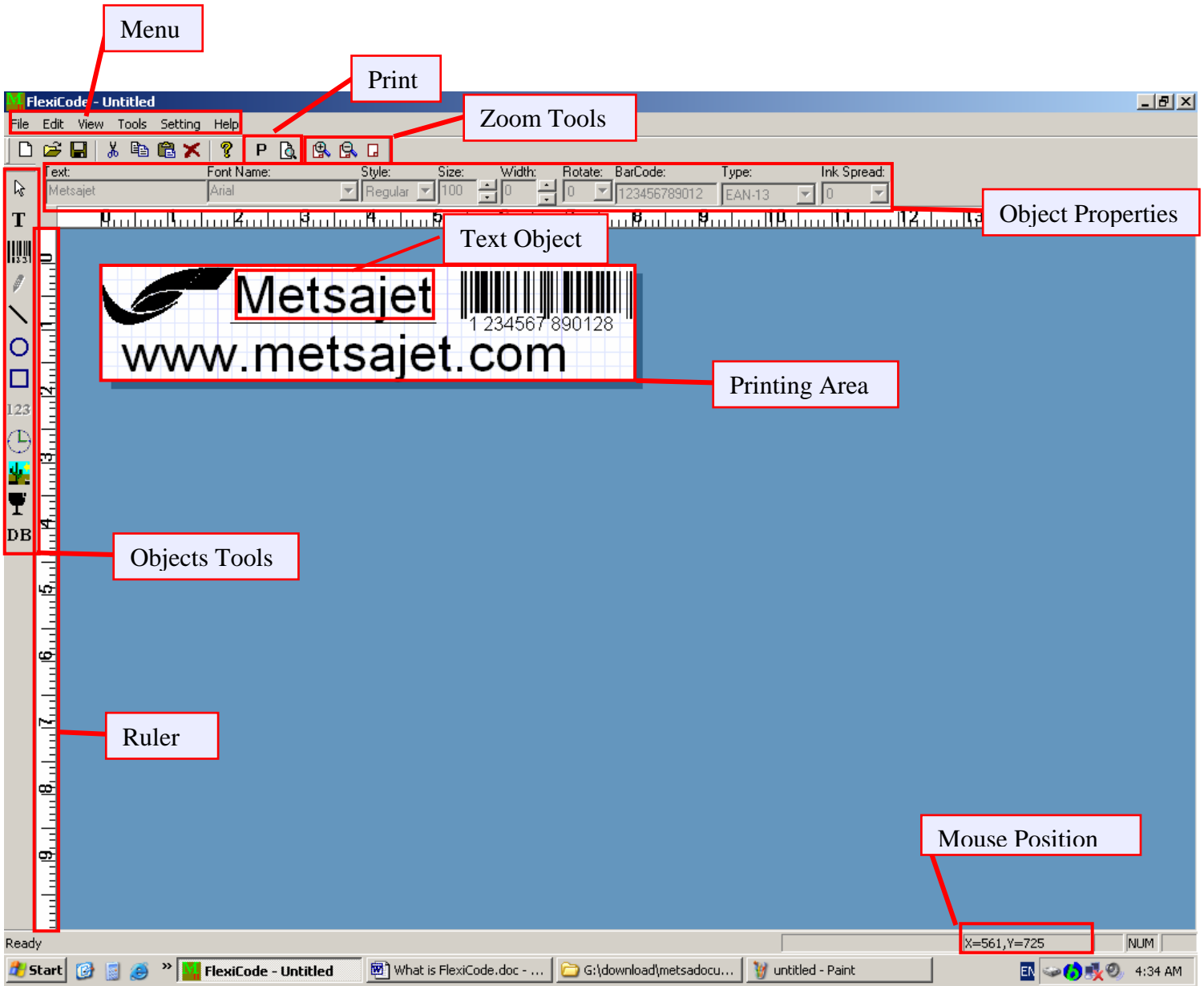
What is a message?

Message is a set of designed objects placed on printing area.



Figure 1 – sample message

FlexiCode Parts:



Menu

Print

Zoom Tools

Object Properties

Text Object

Printing Area

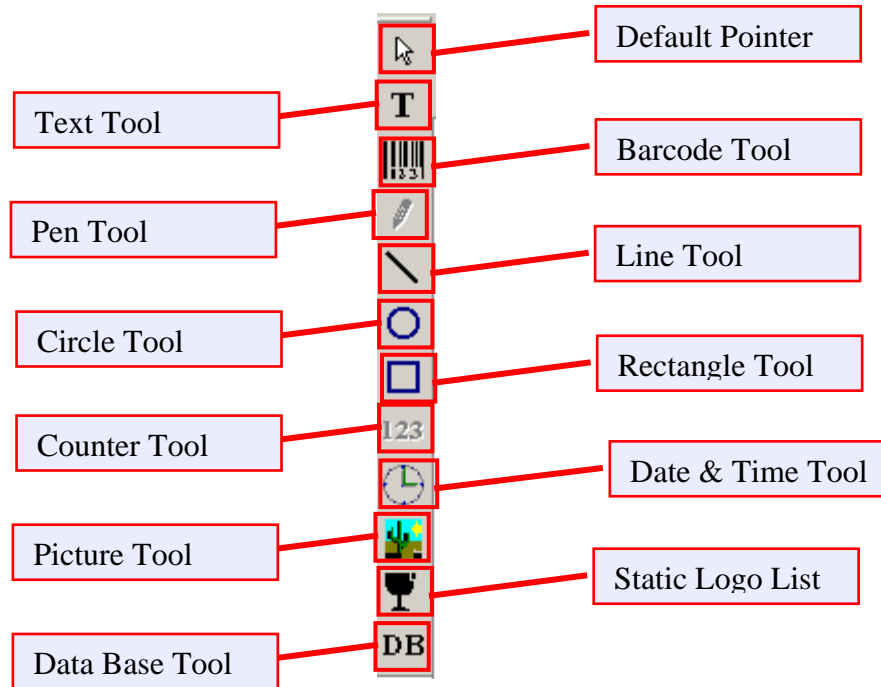
Objects Tools

Ruler

Mouse Position

X=561,Y=725

Objects Tools:



To select every object, its tool should be selected.

Text Tool: With this tool users can add a text on printing area.

To create a Text Object follow these steps:

- 1- Select Text Tool (Text Properties Bar features will be enabled).
- 2- Click on Printing Area to specify Text Position.
- 3- Enter text by keyboard.
- 4- By Object Properties can change Text, Font, Style, Size, Width, and Rotate.
Note: if “Width” doesn’t equal zero, the “Size” specify height.

Barcode Tool: With this tool users can add Barcode on printing area.

To create a Barcode Object follow these steps:

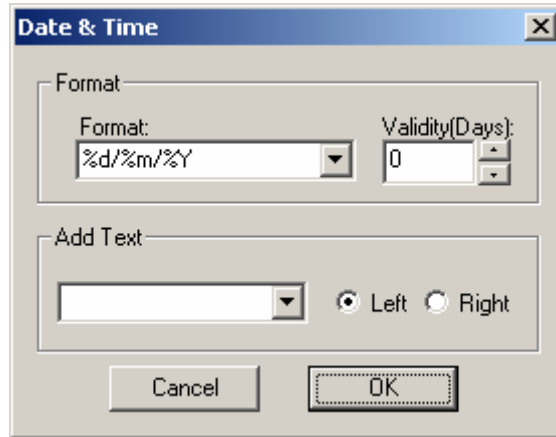
- 1- Select Barcode Tool (Barcode Properties Bar features will be enabled).
- 2- Click on Printing Area to specify Barcode Position.
- 3- Enter barcode number by keyboard.
- 4- By Object Properties can change Font, Style, Size, Width, Rotate, Barcode Number, Type and Ink Spread.

Date & Time Tool: With this tool users can add Date, Time, and Barcode on printing area.

To create a Date Time Object follow these steps:

- 1- Select Date Time Tool (Date Time Properties Bar features will be enabled).
- 2- Click on Printing Area to put date on it.

- 3- Object Properties can change Font, Style, Size, Width, and Rotate.
- 4- To change date format, double click on Date Object to open Date & Time dialog.



Picture Tool: With this tool users can put a Picture on printing area.

To create a Picture Object follow these steps:

- 1- Select Picture Tool
- 2- Double Click on Printing Area to open “open dialog”.
- 3- Select B/W bmp file.
Note: B/W bmp is monochrome bitmap file. To convert color bmp to B/W use “paint”. (To convert save as monochrome bitmap file)
- 4- Click on printing area.
- 5- To change size use right-bottom corner then drag it and resize picture.